

CCVIEW Management System

CCVIEW is CCOM's entire products management platform which is based on JAVA project. The entire system is made up of element, NMS server, client interface. They can connect each other via IP network.

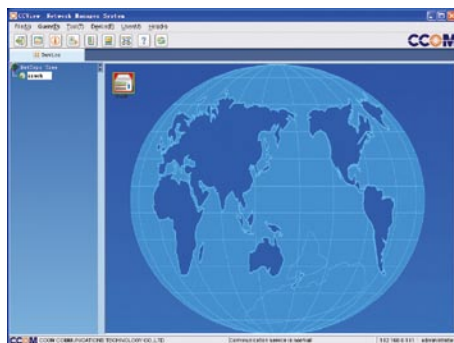
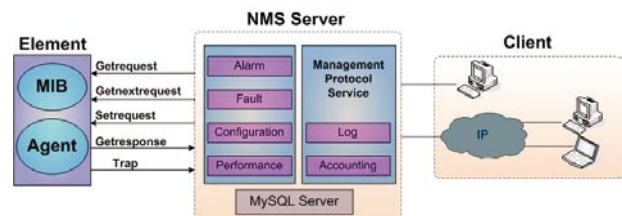
CCVIEW platform uses advanced B/S mode. So the subscriber can use Web Explorer to access the NMS server via IP network, and they can monitor and configure the CCOM's product in anywhere to ensure the high stabilization of product and network. CVIEW system covers CCOM's entire product lines. The friendly and intuitionistic graphic management interface can provide monitor and configuration of products. The users can examine the status and configure the parameters of the element, and they can check the alarm and accounting records.

Features

- Supports SNMP management
- Comply with TMN standard including Fault, Configuration, Accounting, Performance, Security management(FCAPS)
- Bases on WINDOWS 2000/XP system
- The system structure supports LINUX, UNIX, etc.
- Supports B/S mode
- Supports NMS/EMS truss synchronously
- Copy & recovery of data-base
- Easy to review and configure status of network node
- Up to 256 elements could be managed
- Supports multi-user accessing
- Briefness & maneuverable interface
- Language version: English & Chinese

SNMP Architecture

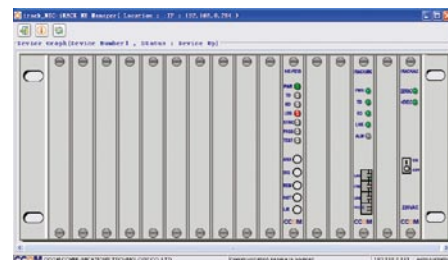
CCVIEW is an network node management platform base on SNMP protocol, and it could cover CCOM's entire product lines including PDH multiplexer, V.35 to E1 converter, Ethernet bridge, etc. The following picture will expound the principle of its working: All management traffic is initiated by the SNMP-based network management station(GetRequest, GetNextRequest, SetRequest), and only the addressed managed agent can using Getresponse to answer the polling of the management station (except for trap messages).



Friendly and intuitionistic CVIEW's graphic management interface supports English & Chinese version. The user can operate the interface expediently follow the instruction.

Element management

CCVIEW system can provide powerful element management function. The users can not only examine the status of both card and standalone units in the local or remote end, but also manage the units. The items include setting, loading, saving, recovering default parameters of SNMP protocol



Log Management

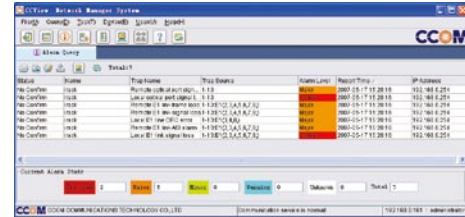
Accounting management can record all the operating events of system, such as: login success, login failed, elements fault, add device, delete the device, etc. This information can not be deleted, and can be filtered according operation time, event type, severe level, etc.

Accounting Management

User management can add new user, delete existing user, modify the password, institute management level, etc.

Alarm Management

Alarm management can provide alarm record and management about network node, and all the alarm information can be showed in the system interface. Multiform alarm level: critical alarm, major alarm, minor alarm, etc. Furthermore, these alarms can be identified in different color, and they can be displayed real time. The user can filter the alarm information via the alarm level of elements.



Application

In the following example, CCVIEW system is a new new-style and powerful SNMP-based network management system (NMS), and it provides a complete set of monitoring and configuration function for CCOM's product. Up to 256 elements could be managed by CCVIEW, and the status of each net node, each rack and each card can be managed and monitored timely via the IP net and SNMP protocol. CCVIEW system support advanced B/S mode, the subscriber can use Web Explorer to access NMS server via IP network to realize remote and mobile management.

