

Ethernet Media Converter

NIF-iWA / NIF-iSA / NIF-iMA



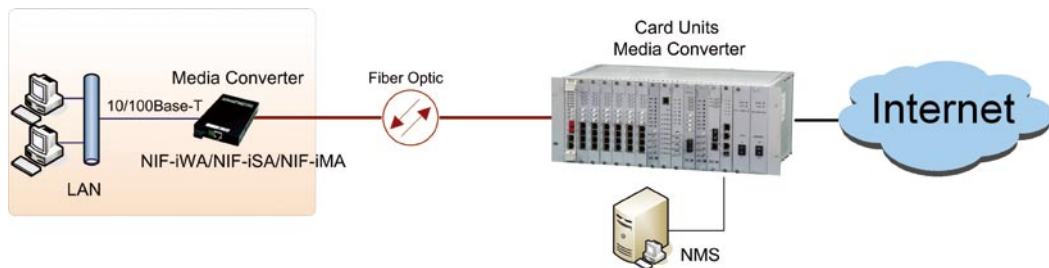
Description

The 10/100Base-T Ethernet media converter can be used for extending the transmission distance between two Fast Ethernet devices via fiber cable transparently with no performance degradation.

Features

- Support LFP(Link fault pass through) function
- Optional MM/SM transmission mode, supports WDM technology
- Optical reachable distance from 2Km to 120Km
- Auto-negotiate to half / full duplex mode
- Support the maximum data packages to 1600bytes
- The bandwidth can be configured at 2.5 -5- 7.5- 10- 25- 50- 75- 100Mbps
- Support SNMP management

Application



Specification

Ethernet Interface

- Standard: comply with IEEE802.3、802.3u
- Baud rate: Full rate 10/100Mbit/s, auto-adjusting/force mode
- Duplex Mode: force or Auto-Negotiation on Half / Full Duplex Mode
- Auto MDI/MDI-X
- Connector: RJ-45

Optical Interface

- Standard: comply with IEEE 802.3u 100BASE-FX
- Rate: 100M
- Transmission distance:
 - 2km(MM, dual fibers)
 - Up to 120km(SM, dual fibers)
 - Up to 60km(WDM)
- Wavelength: 1310nm(MM)
 - 1310nm(SM, ≤80km)
 - 1550nm(SM, >80km)
- Connector: FC/PC or SC/PC

Physical Summary

- Dimension:
 - Standalone: 150mm(L) x 92mm(W) x 21.7mm(H)
 - Card: 87mm(L) x 22.2mm(W) x 113.5mm(H)
- Power: 90 to 265 VAC, 50 Hz±2%, <5W
 - 36 to -72 VDC, <5W (only for standalone unit)
 - 18 to 36 VDC, <5W(only for standalone unit)
- Temperature:
 - 0℃-50℃ for operation
 - -20℃-70℃ for storage
- Humidity: ≤90% (non-condensing)

1

Multi-access System

2

Compact SDH/MSTP Multi-Service Platform

3

PDH Fiber Optical multiplexer

4

PDH Fiber Optic Multiplexer

5

PDH Fiber Optical Multiplexer

6

G.SHDSL PRODUCT

7

E1 Inverse Multiplexer

8

Ethernet Bridge

9

G.703/G.704 to V.35 Converter

10

Ethernet Media Converter