

# Compact SDH/MSTP Multi-Service Platform

## OTS-155

NEW



### Description

The 19inch 1U high OTS-155 is a mini MSTP unit base on SDH . The unit provides E1 and Ethernet service over the STM-1/SDH, and it is an optimal last mile solution for carrier and is designed for the Telecom networks.

It decreases the cost of system for subscribers. All technical features and index of OTS155 meet the specification of ITU-T and national SDH. OTS155 is a multi-service transmission platform that mixes the traditional and broad-bandwidth services to the telecom, and it provides a low cost multi-service transmission to the subscribers.

OTS-155 provides dual STM-1 optical interfaces, and Support point-to-point, Ring, Chain topology. SNCP function provides a safe and stable protection for the ring or chain network.

OTS-155 can be used for PSTN access or A-bis transmission for the base station.

### Features

- point-to-point, Ring, Chain network
- 7X7 VC4 non-blocking cross connection
- Provide 16 transparent E1 channels
- High-flexibility EOS modular design:
  - 4x10/100Base-T Module
  - 2x10/100Base-T+2x100Base-FX Module
- One V.24 (RS-232) transparent channel
- Local and remote loop test and BERT
- Support, ring uni/bi-directional path protection and linear multiplex selection protection(MSP)
- Support SNCP function
- Support Ethernet GFP encapsulation & VCG/LCAS function
- Ethernet interface supports VLAN TAG & VLAN TRUNK function
- SNMP management & CIT management
- Support SDH order-wire subsystem
- Support online upgrade without service cut down
- Redundant power: AC+AC, DC+DC, AC+DC

1

Multi-access System

2

Compact SDH/MSTP Multi-Service Platform

3

PDH Fiber Optical multiplexer

4

PDH Fiber Optic Multiplexer

5

PDH Fiber Optical Multiplexer

6

G.SHDSL PRODUCT

7

E1 Inverse Multiplexer

8

Ethernet Bridge

9

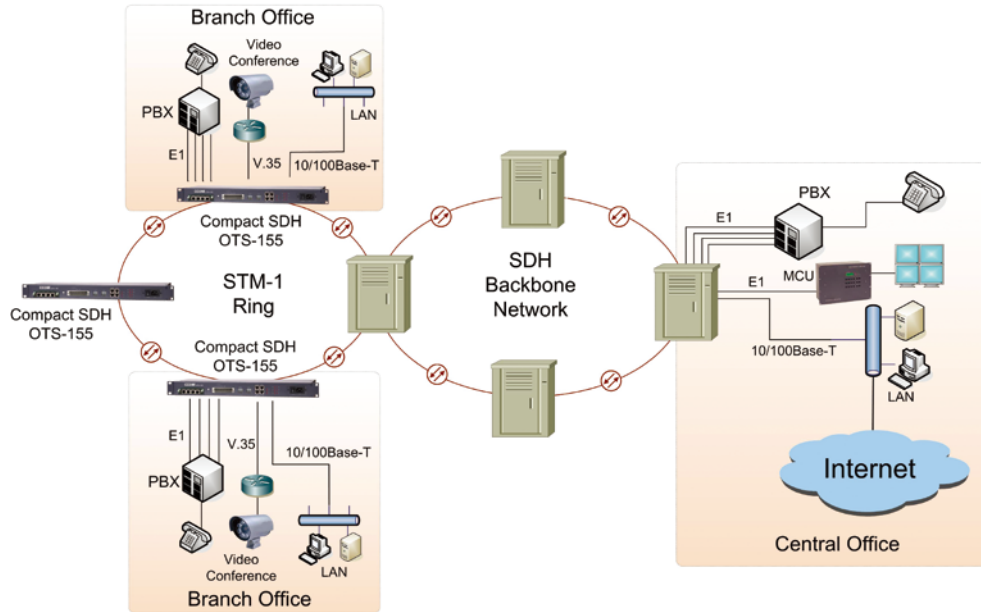
G.703/G.704 to V.35 Converter

10

Ethernet Media Converter

## Application

Solution: Ring topology, 4 Ethernet interfaces sharing VC TRUNK ring at switch or VALN mode.



## Specification

### Ethernet Interface

- Standard: comply with IEEE802.3, 802.3u, 802.1q, 802.1p
- Baud rate:
  - Full rate 10/100Mbit/s, auto –adjusting /force mode
  - 100Base-FX, 100Mbps
- Self-study and refresh MAC address Automatically
- Connector
  - 10/100Base-T: RJ-45, auto MDI/MDI-X
  - 100Base-FX: SC/PC, FC/PC
- Transmission distance:
  - 10/100Base-T: 100m
  - 100Base-FX: up to 120Km

### G.703 Interface

- Standard: comply with ITU-T G.703
- Coding: HDB3
- Jitter: comply with ITU-T G.823
- Rate: 2.048Mb/s±50ppm
- Connector: BNC female(75Ω) or RJ-45 (120Ω)
- Transmit high voltage:
  - 2.37V± 10%(75Ω)
  - 3.00V±10%,(120Ω)
- Transmit low voltage: 0 ± 0.1V

### EXT Clock Synchronization Port

- Standard: ITU-T G.813/783
- Input: T1,T2,T3
- Output: T4
- Function: Supports SSM, Provides clock holding, locking, free running mode
- Interface: RJ-45

### STM-1 Interface

- Rate: 155.52Mbps±4.6ppm
- Standard: ITU-T G.957/G.958
- Medium type: ITU-T G.652/G.653/G.655, single mode
- Wavelength: 1310nm/1550nm
- Transmission distance: up to 120km
- Interface type: S-1.1, L-1.1, L-1.2
- Connector: SFP optical module, LC interface

### Asynchronous Port

- Port type: RS-232
- Connector: DB-9(Male)
- Rate: 300~57600bps, Asynchronous, Rate Auto-Negotiation

### Physical Summary

- Timing: Receive clock(REC)
- Dimension: 426mm(W)×44mm(H)×225mm(D)
- Weight: 2.5kg
- Power: 90 to 265 VAC, 50 or 60Hz±2%, <30W, -36 to -72 VDC, <30W
- Power mode: AC+AC, AC+DC, DC+DC
- Temperature: 0°C~45°C for operation, -20°C~70°C for storage
- Humidity: ≤90% (non-condensing)

### Alarm Output Interface

- Connect with external alarm device
- Interface type:
  - Major sound alarm, Minor sound alarm
  - Major light alarm, Minor light alarm
- Connector: RJ-45