

# 4/8xE1 Fiber Optic Multiplexer NIFT-i4ES



## General

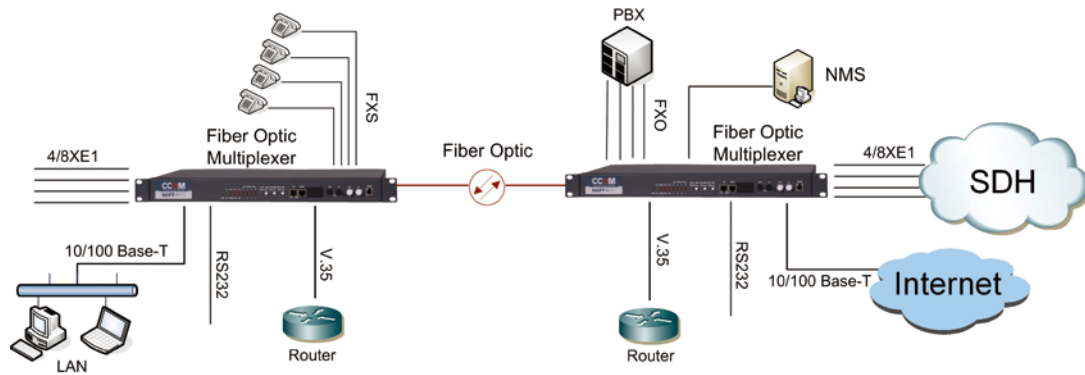
Also called "MSTP" PDH which integrate both fiber media converter and PDH production. The NIFT-i4ES is the new generation fiber optic multiplexer, its excellent compositive chipset make sure that the multi-operation data steadily transmits through the optical fiber. It has more advantageous, such as highly integration, lower consumed power, and lower cost.

Perfect alarm indication and monitor function can be provided by NIFT-i4ES. Such as optical signal loss, optical signal synchronization loss,  $10^{-3}$  and  $10^{-6}$  error code, E1 signal loss alarm indication, Ethernet connect indication, etc.

## Features

- Single unit (1U), 19" rack mountable
- Providing Services:
  - 4/8x E1 channels
  - full rate 100Mbps Ethernet channel
  - 1xRS-232 asynchronous channel
  - 1xorder wire
  - 1xOptional I/O Module:
    - 1x V.35 Data module
    - 4xFXS/FXO Voice module
- Local and Remote Loop-Back Functions
- Perfect indicators for real time remote alarm.
- Redundant fiber 1+1 protection (Optional).
- Auto Laser Shutdown (ALS)
- Support the SNMP management
- Optional AC+DC power supply redundancy

## Application



### Technical Specification

#### System Capacity

- Provide 4/8xtransparent E1 channel
- Full rate 100Mbps Ethernet channel
- 1xRS-232 asynchronous channel
- 1xorder wire
- 1xOptional extend I/O Module slot
- 1xInner SNMP module slot

#### G.703 Interface

- Standard: ITU-T G.703 & G.823
- Rate: 2048Kbps±50ppm for each E1 channel
- Line code: HDB3
- Itter: comply with ITU-T G.823
- Impedance: 75Ω for unbalanced  
120Ω for balanced
- Connector: DB-37( Optional Q9, CC3, CC4, RJ-45 interface adapter cable )

#### Ethernet Interface

- Standard: IEEE 802.3 802.3u 802.1q
- Support VLAN trunk and flow control
- Frame Length: 64byte(mini)/1916byte(max)
- MAC Address: 8K
- MAC Address Update: 5 Minutes
- Full rate: 100M
- MDI/MDI-X Auto-Negotiation
- Connector: RJ-45

#### Asynchronous port

- Port type: RS-232
- Connector: DB-9(Male)
- Rate: 300~57600bps, Asynchronous, Rate Auto-Negotiation

#### Optical Interface

- Redundant fiber 1+1 protection
- Auto Laser Shutdown (ALS) prevention
- Supports SM, MM, WDM
- Fiber account: single or dual
- Rate: 150Mb/s±50ppm
- Line Code: NRZ
- Transmission Distance: 0~120km
- Connector: FC/PC or SC/PC

#### Alarm Output Interface

- Connect with external alarming device
- Connector: DB-9(Male)
- Major alarm: Local E1 LOS, LOF, Optic signal loss,  $10^{-3}$  bite error rate
- Minor alarm: Local  $10^{-6}$  and all remote alarm
- Voltage: 60V

#### Physical Summary

- Dimension: Standalone: 426mm(W)×219mm(D)×44.45mm(H)  
Card: 250mm(W)×28mm(D)×144mm(H)
- Weight: Standalone: 1.96Kg  
Card: 0.3Kg
- Power: 90 to 265 VAC, 50 or 60 Hz, 10VA  
-36 to -72VDC, 8W (only for standalone unit)  
18 to 36 VDC, 8W(only for standalone unit)
- Temperature: 0°C-50°C for operation  
-20°C-70°C for storage
- Humidity: ≤90% (non-condensing)

1

Multi-access System

2

Compact SDH/MSTP Multi-Service Platform

3

PDH Fiber Optical multiplexer

4

PDH Fiber Optic Multiplexer

5

PDH Fiber Optical Multiplexer

6

G.SHDSL PRODUCT

7

E1 Inverse Multiplexer

8

Ethernet Bridge

9

G.703/G.704 to V.35 Converter

10

Ethernet Media Converter